

September/October 2011

Sean Denston - 4Trades Apprenticeship Celebration

Helen Mills the owner of John Homan Motors was impressed with Sean's energy and determination to succeed the very first time she had the opportunity to discuss the possibility of an apprenticeship with him. Her instinct that this was a young man who would make the most of his chance and develop into a very good mechanic were proved to be sound. Sean has just completed his National Certificate in Automotive Engineering at Homan's Motors. From day one Sean demonstrated an above average ability on the tools and within a year was able to carry out most service and repair tasks in the workshop. Sean has worked with a very skilful and supportive team of mechanics at Homan's, ably led by Dennis Van der Hilst. Dennis has been Sean's main workshop mentor over the course of his apprenticeship and can take a lot of credit for training Sean to achieve high levels of technical expertise. He and Helen have also encouraged Sean to understand and appreciate the need for professionalism and team work in the workshop. In 2010, Sean was named as the MTA Otago region, Apprentice of the Year. This award is presented to the apprentice who not only demonstrates strong practical and technical knowledge but is also judged on such attributes as temperament, courteousness etc. Bill Cubitt from 4Trades Apprenticeships managed the Distance Learning/Theory component of Sean's training and was impressed with his determination to get the paperwork under control. Bill also took part in performance reviews with Sean and Helen at 6 monthly intervals during the apprenticeship. He and Helen both appreciated and admired the manner in which Sean would react to feedback and take the necessary steps to do things better. Sean's qualification is a very good example of an entire workplace supporting an apprentice to achieve the end goal. The professional attitude at Homan's has provided Sean with a solid platform from which to work and an excellent range of automotive repairs and services on which to learn his trade.



Projected Growth in The Clutha District

The Clutha District Council has put together the Projected Growth Assumptions report as part of the development of the Long Term Plan 2012 - 2022. In general the report predicts that the population will remain relatively stable within the district on the back of a continued strong rural economy over the next decade. Dairy conversions are expected to continue, although limits on water availability in some areas will constrain further conversions.



Dairy payouts are expected to remain favourable over the next three years, and sheep and beef returns are expected to strengthen. The performance of the primary sector, however will be highly dependent on factors such as the exchange rate, climate, fuel costs, and the wider global economy. The tourism sector is also expected to experience ongoing growth. Exposure from the Rugby World Cup 2011 and the proposed Clutha Gold Trail from Roxburgh to Lawrence are two potential drivers of increased tourist numbers for the district. Again, tourism growth will also be dependent on factors such as fuel prices and the exchange rate. Although the overall population of the district is forecast to remain relatively stable or decline slightly over the next decade, there are areas (such as Clinton and Kaitangata) that will likely experience faster than average decline and other areas (such as Waihola, Taieri Mouth, Milton/Milburn) that will experience growth. The Clutha District Council invite feedback on the report by September 16th 2011, a full copy of the report can be viewed on their website www.cluthadc.govt.nz.

Clutha District Civil Defence

It was encouraging to see that in our recent business confidence survey that 44.8% of businesses indicated that they had an emergency management plan, with some planning for this to be done by the remaining businesses. Recent national events and the question in the survey seem to have prompted some businesses to consider this more carefully.



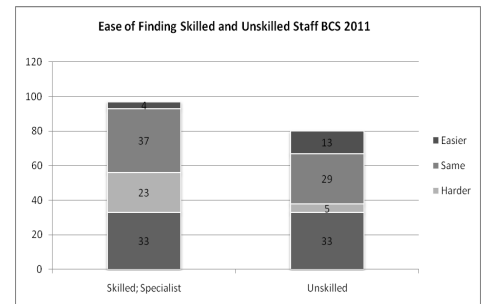
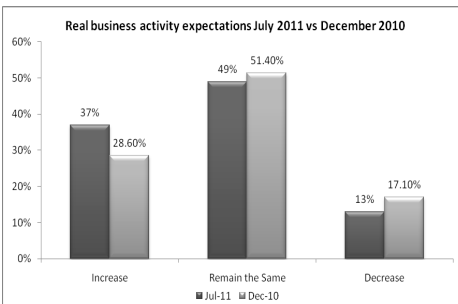
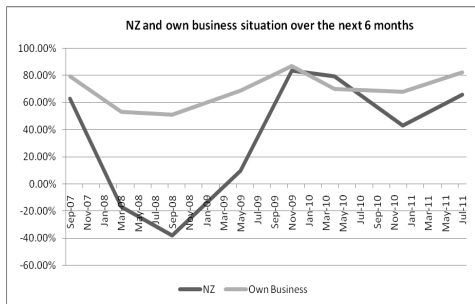
Balclutha Central Business District Flood Action Plan:

This emergency plan has been updated and the information explaining the action required in case of a flood will be sent out this month. A test of the system is planned for late September early October.



Enterprise Clutha July 2011 Business Confidence Survey Results

Thank you to all the businesses that responded to the July 2011 Business Confidence Survey, we had an increased response rate of 11.76% which was encouraging. A broad cross section of businesses were represented, the most responses coming from the retail (19%) and the agriculture, forestry and fishing sectors (13%). The overall feeling is that the general business situation in New Zealand and in individual businesses will remain the same over the next 6 months, with more predicting an improvement than a decline. The net situation, is on the increase for both the NZ situation and individual businesses and is trending up to levels of 18 months ago. Looking at those that noted the finding of skilled and unskilled staff as applicable to them considerably less businesses are finding it easier now than it was six months ago to find skilled staff, 6.25% now versus 32.5% in December 2010 with many finding it harder 35.94% versus 3.2%. In the previous six months 38 businesses took on 88 employees; 22 businesses took on 61 more full time employees and 18 businesses took on 28 part time employees. The number of full time staff was up by 40 on the previous period, with the number of part time falling by 4, overall the number of businesses that took on people however increased by 13. A positive sign for the local economy is that 23 businesses have undergone some expansion over the last 12 months, the same number as the December survey and 25 have plans for expansion in the coming 12 months, up 8 businesses. For more details and graphs on the results of the survey visit www.eclutha.org.nz



Otago Chamber of Commerce Beer and Yarn and 150th Celebrations

Join the Otago Chamber of Commerce for a beer and yarn, Tuesday 6 September 2011 from 5.15pm at the Captains Bar. To register please phone 0800 42 49 68 or email office@otagochamber.co.nz.

Congratulations to the Otago Chamber of Commerce celebrating their 150th Anniversary on 13th September 2011



BUSINESS SUPPORT & FUNDING THAT IS AVAILABLE TO YOU

It's THAT EASY!

"So far we've accessed:

- Training vouchers

Over the next year we are working towards:

- Marketing and business development funding

Also available:

- Mentor support
- Business advisory services

Colin Mitchell, Managing Director
Classic Wood Products

If he can do it, you can do it!

NZ Agribusiness Showcase

Do you have international visitors staying with you? Bring them along to the NZ Agribusiness Showcase two Agri Tech field days for Otago/Southland. Day 1 is at Telford Agricultural College (Balclutha) on 12th September. Day 2 is at Barewood Station, Pukerangi (inland Dunedin, near Middlemarch) on 13th September. For a more detailed programme see www.eclutha.org.nz/pages/8/Downloads or to register contact

Tamara.Skevington@nzte.govt.nz.



Community Law

Thursday 15th September and 20th October 2011
Phone 03 418 4048 for an appointment

Inland Revenue

Wednesday 7th September and 5th October 2011
Phone 03 904 0888 for an appointment

enterprise clutha

Building Opportunities

Development House On the Road

Milton - Tuesday 6th September
Lawrence - Tuesday 4th October
Phone Sarah on 03 4184048 to book an appointment